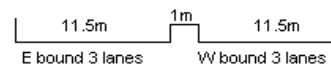
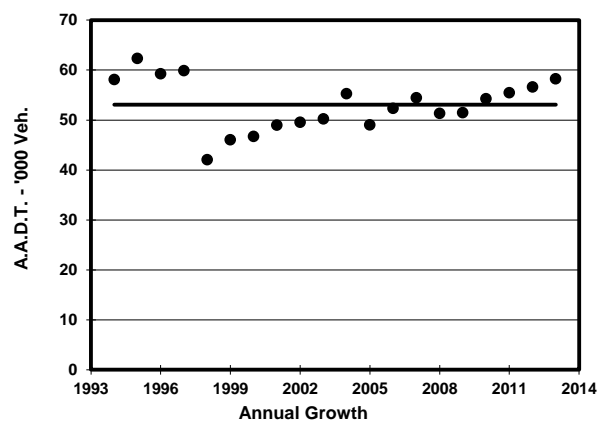
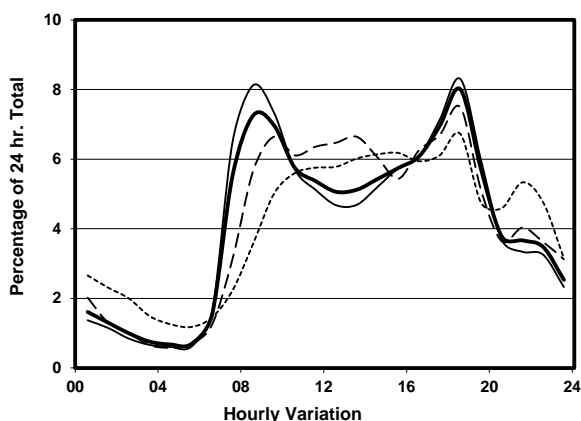
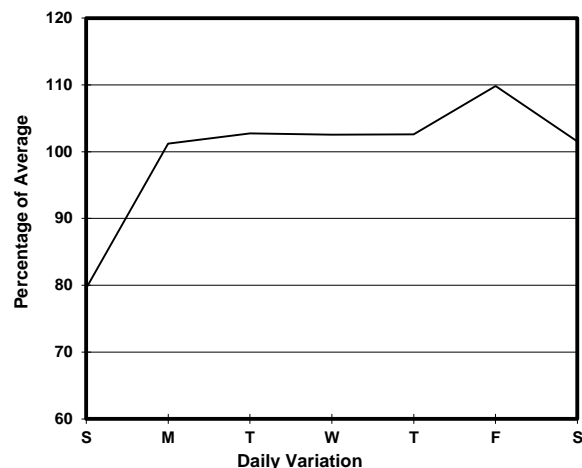
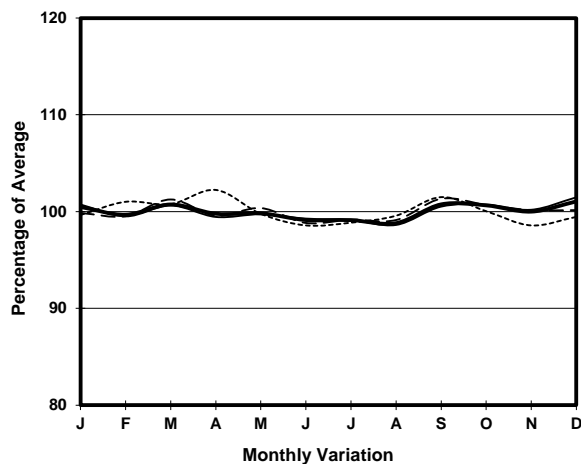


YEAR 2013
 COVERAGE (B) STATION 4219
 ROAD NETWORK MAJOR
 ROAD TYPE EXPRESSWAY

LINK KWUN TONG BYPASS (from KAI YAN ST to LUNG CHEUNG RD)



1. TRAFFIC FLOW VARIATION AND GROWTH



2. TRAFFIC CHARACTERISTICS (BY DIRECTION)

Parameter	All - Day	Mon. - Fri.	Sat.	Sun.
EAST BOUND				
A.A.D.T.	31420	32910	32330	25510
R 12 / 24 - %	71.9	73.7	71.3	61.1
R 16 / 24 - %	88.6	89.7	89	81.3
AM Peak Hour	0900-1000	0800-0900	0900-1000	0900-1000
One-way flow at AM peak hour	2390	2740	2140	1150
T - % (AM)	-	11	-	-
PM Peak Hour	1800-1900	1800-1900	1800-1900	1800-1900
One-way flow at PM peak hour	2370	2510	2500	1710
T - % (PM)	-	6.2	-	-
Prop.of commercial vehicles - 16 hr.	-	9.5	-	-
WEST BOUND				
A.A.D.T.	26820	28210	27440	21380
R 12 / 24 - %	75	75.7	75	69.8
R 16 / 24 - %	91.4	92.2	89.8	88.4
AM Peak Hour	0800-0900	0800-0900	0900-1000	0900-1000
One-way flow at AM peak hour	1940	2230	1840	1200
T - % (AM)	-	8.6	-	-
PM Peak Hour	1800-1900	1800-1900	1700-1800	1800-1900
One-way flow at PM peak hour	2300	2560	1980	1450
T - % (PM)	-	6.6	-	-
Prop.of commercial vehicles - 16 hr.	-	9.9	-	-

3. OTHER INFORMATION AND COMMENT

Coverage (B) Station 4219
Year 2013

4. Vehicle classification and occupancy - Monday to Friday

Time		Class of vehicle									
		Motor Cycle	Private Car	Taxi	Private LB	PLB	Goods veh.		Non Fr. Bus	Fr. Bus	
							Light	M & H		SD	DD
0700-0800	Pro	2.1	53.4	13.3	2.6	2.0	11.6	5.4	5.9	0.0	3.7
	Ocp	1.0	1.3	2.1	2.5	8.4	1.4	1.5	20.6	0.0	71.9
0800-0900	Pro	2.9	58.1	12.9	0.9	0.9	14.1	5.1	1.7	0.0	3.2
	Ocp	1.2	1.3	2.1	4.5	10.5	1.6	1.4	37.4	0.0	67.1
0900-1000	Pro	2.5	52.9	13.0	0.7	1.2	20.6	5.4	1.3	0.0	2.3
	Ocp	1.1	1.3	1.9	1.3	7.0	1.6	1.3	18.2	0.0	34.7
1000-1100	Pro	2.3	43.4	15.2	0.8	1.2	25.1	8.6	1.1	0.0	2.5
	Ocp	1.0	1.4	2.0	1.7	5.7	1.5	1.3	12.7	0.0	33.8
1100-1200	Pro	1.3	44.5	12.7	1.2	2.0	26.2	8.5	1.0	0.0	2.5
	Ocp	1.2	1.2	2.2	2.3	3.7	1.5	1.4	5.6	0.0	38.9
1200-1300	Pro	1.3	56.5	12.3	1.7	1.3	17.3	5.1	2.3	0.0	2.2
	Ocp	1.0	1.5	2.0	7.5	9.0	1.5	1.1	13.6	0.0	40.1
1300-1400	Pro	1.8	45.5	13.1	0.4	1.2	24.2	9.4	1.9	0.0	2.4
	Ocp	1.1	1.4	1.9	2.0	8.1	1.5	1.1	7.2	0.0	40.9
1400-1500	Pro	2.5	45.5	13.8	1.2	1.2	23.8	8.2	1.4	0.0	2.4
	Ocp	1.1	1.5	2.3	2.8	7.0	1.5	1.2	1.9	0.0	36.7
1500-1600	Pro	3.0	50.3	11.2	1.3	1.3	20.7	7.8	2.3	0.0	2.2
	Ocp	1.0	1.3	2.2	8.8	7.5	1.5	1.2	14.7	0.0	36.8
1600-1700	Pro	3.5	49.0	13.8	2.0	1.2	19.6	6.6	2.3	0.0	2.2
	Ocp	1.1	1.3	2.1	2.2	7.8	1.7	1.2	5.4	0.0	46.6
1700-1800	Pro	3.1	56.0	10.6	0.7	1.5	19.4	4.1	2.2	0.0	2.4
	Ocp	1.0	1.4	2.1	1.4	7.9	1.5	1.3	6.5	0.0	60.2
1800-1900 Peak hour	Pro	3.9	66.6	11.4	0.4	1.3	9.9	2.9	1.4	0.0	2.1
	Ocp	1.0	1.4	2.4	2.2	11.6	1.3	1.4	19.7	0.0	73.2
1900-2000	Pro	2.3	71.8	11.1	0.0	1.6	7.2	2.0	0.9	0.0	3.1
	Ocp	1.1	1.3	2.3	0.0	13.8	1.2	1.1	11.6	0.0	67.5
2000-2100	Pro	2.9	72.1	10.9	0.2	2.0	6.4	1.1	0.5	0.0	3.8
	Ocp	1.1	1.4	2.3	1.0	6.6	1.4	1.3	21.0	0.0	48.1
2100-2200	Pro	2.0	65.4	16.9	0.4	1.2	7.5	1.6	0.6	0.0	4.3
	Ocp	1.1	1.4	2.5	1.5	13.5	1.4	1.3	7.7	0.0	41.6
2200-2300	Pro	3.5	67.8	17.3	0.6	2.0	4.1	0.8	0.0	0.0	3.8
	Ocp	1.2	1.3	2.3	1.3	6.2	1.2	1.0	0.0	0.0	45.6
16 hours	Pro	2.6	56.0	12.9	0.9	1.4	16.5	5.3	1.7	0.0	2.7
	Ocp	1.1	1.4	2.2	3.4	8.4	1.5	1.3	15.4	0.0	51.3

Legend

Pro. Proportion of vehicles in % (Sum may not add up to 100% due to figure rounding)
Ocp. Average occupancy of vehicles
M&H Medium and Heavy